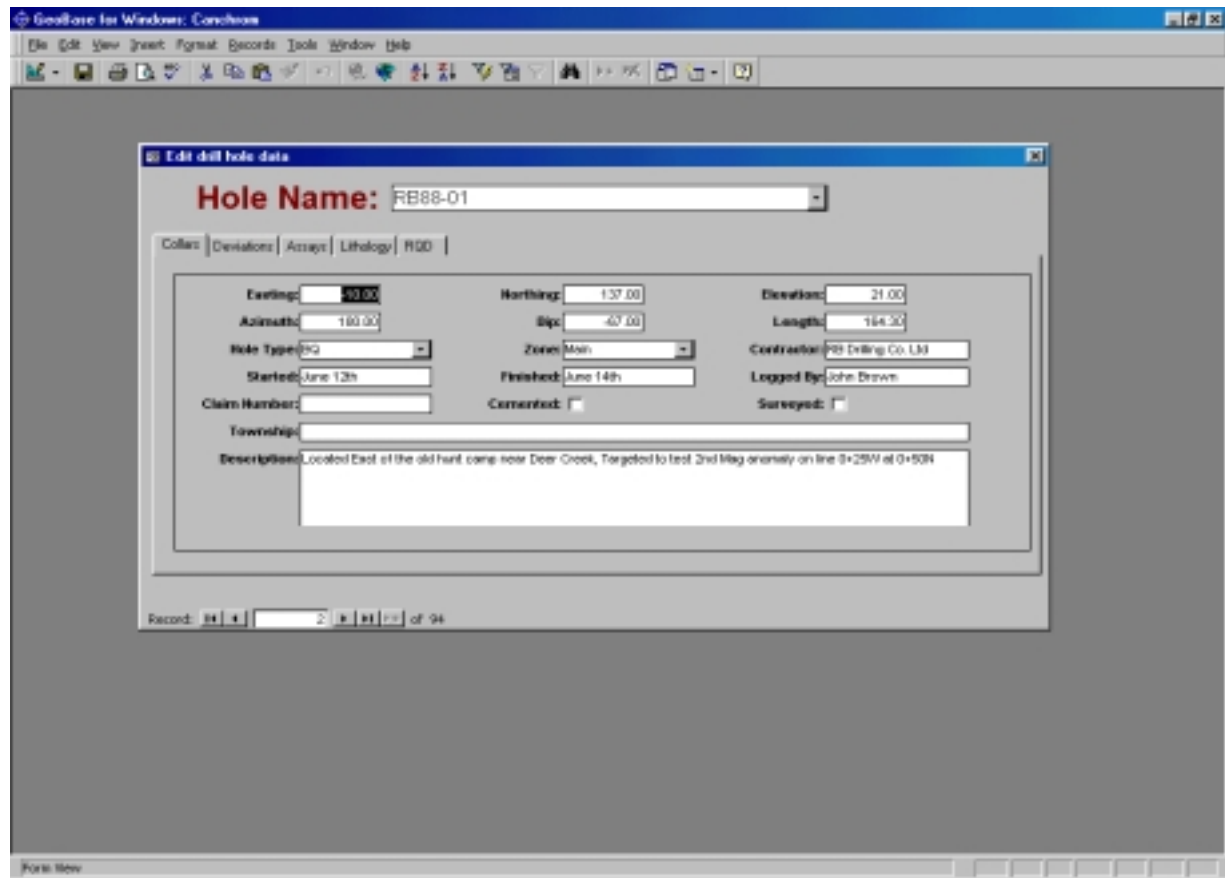


GEOBASE

Drill Hole Database Management System with Microsoft® Access



- ◆ Interactive Data Entry
- ◆ Import / Export ASCII format
- ◆ Printing of Drill Hole Logs
- ◆ Data Validation
- ◆ Automatic Importation of lab assay data

Features

- ◆ GeoBase is a drill hole database management system. It runs within Microsoft® Access 97. As such GeoBase is an Access database containing form, query, reports and code objects only. Hence to use GeoBase, you need to have Microsoft® Access installed on your computer.
- ◆ GeoBase code is made available to you. You can examine it and modify it the way you want. This is a deliberate decision since we feel that each geologist may have his own special requirements for drill hole data handling. With the code and sufficient knowledge of Access and Visual Basic for Applications, you can create your own features and customize your GeoBase.

Standard Features

- ◆ Definition of the database structure to fit your particular needs. You can define a title, the number of elements in each assay, the captions (or labels) to use for each element.
- ◆ Interactive data entry. You enter the drill hole data through the pre-defined forms. For each drill hole, you enter the collar information, the down hole survey (if any), the assay results and the lithological descriptions (down to four levels).
- ◆ A special option lets the use view the drill hole data without the ability to change any of it. This is a safety feature.
- ◆ You can perform extensive validation of your database. GeoBase will scan it for inconsistencies and errors and will produce statistics about the contents of the database.
- ◆ GeoBase will export your drill hole data in ASCII format in either a drill hole file compatible with all the Geostat software or in tabular format (one file per database table).
- ◆ GeoBase will import existing drill hole data from ASCII files from either a drill hole file (in Geostat format) or from distinct files for each component of a drill hole (collar, survey, assay and lithology).
- ◆ GeoBase will print logs of your drill holes. You can make select of the drill holes to generate or print the entire database. A variety of report formats are available (e.g. 8.5x11 in., 8.5x14 in., portrait or landscape).
- ◆ Because GeoBase uses Access, it is ODBC compliant and because it is a regular Access database, you can integrate it with your regular suite of applications (MS Word, Excel or other).
- ◆ GeoBase's databases are directly accessible by SectCad for Windows (without ASCII transfer).

GEOSTAT SYSTEMS INTERNATIONAL INC.

10 de la Seigneurie East, suite 203, Blainville, Quebec, Canada J7C 3V5

Tel: (450) 433-1050 Fax: (450) 433-1048 Toll free/US&Canada 1-800-474-6561

e-mail: info@geostat.com Web: <http://www.geostat.com>

Geostat is a trademark of Gamma Geostat International Inc. SYSTEMES GEOSTAT INTERNATIONAL INC. is an authorized user of the trademark.